



PHONE 805-498-3121
FAX 805-498-1855
EMAIL info@hansonlab.com
WEB www.hansonlab.com



814 Mitchell Road | Newbury Park, CA 91320

About HLF

Building Great Labs Since 1973

Since 1973, Hanson Lab Furniture (HLF) has built an outstanding reputation among discerning lab customers who seek quality, service, and value.

- Unlike others who simply follow specifications, we know labs.
- We have 40 years' experience working with scientists and technicians, providing design solutions and installation for their lab interiors.
- We offer the fastest delivery and the only true QuickShip program in the industry. We have over 1000 feet of cabinets and accessories in stock and ready to ship.
- We start on time, deliver on time, and finish on time. If you've built even one lab in your lifetime, you know how rare that is, and how valuable.

How To Use This Catalog

Product Organization

Use our quick index or browse through the major project sections to find what you need. Sections are organized by product group for easy identification.

Items in the catalog are available in our QuickShip program. Look for the  next to the model number.

If you need technical specifications or special items that are not shown, contact your HLF representative.

Lab Planning 101

If you're planning a more substantial laboratory project, take some time to read through **Lab Planning 101: Ten Ways To Build A Better Lab**. Whether this is your first lab or you've built dozens of them, we hope you'll find these tips and ideas valuable in your approach to designing the best possible lab at the best overall cost. And you'll find that your new lab will be better equipped to accommodate changing laboratory requirements later, especially with cost-effective flexibility solutions like our HLF Agility, Mobile and Shelving product lines.

No-Cost Lab Planning Help

Why go it alone when you can have expert help at no additional cost? We'll be glad to help you with your laboratory design.

From your overall laboratory plan to your specific work station requirements, our representatives can help you design your lab in the most economical way possible, using a balance between fixed and flexible casework options. Give us a call. We're glad to help.

Index

About HLF	1.2
Lab Planning 101.....	1.3



Ready to get started? Call us at 1-805-489-3121.

Email us at info@hansonlab.com Or call your HLF representative.

Table of Contents

About HLF 1.2

Lab Planning 101 1.4

Steel Casework 2.1

Infinite combinations for any lab

Base and Specialty Cabinets

- Sitting Height
- ADA Height 32"
- Standing Height
- Cabinet Accessories
- Fillers and Scribes
- Apron, Drawer and Leg Assemblies
- Knee Space and Rear Enclosure Panels

Wall Cabinets

Tall Cabinets



Accessories 3.1

Everything you need to complete your lab

Service Fixtures

Safety Equipment

Sinks

Electrical Fixtures

Pegboards / Drying Racks

Counter top Work Surfaces

Shelving 4.1

Make the most of square footage with vertical storage

Wall Shelving

Island Shelving

Shelf Styles and Sizes

Agility / Mobility 5.1

Maximum flexibility with mobile and modular systems

Mobile Tables

- Basic Fixed Height Tables
- Heavy Duty Welded Tables
- Adjustable Height Tables
- C-Frame Single and Island Tables
- Add-A-Bench Table System

Table Accessories

Suspended and Mobile Cabinets

Overhead Service Carriers

Umbilical Pipe Chase Enclosures

Fume Hoods 6.1

Bench top, walk-in, and custom configurations, with the fastest fume hood shipping times in the industry

Hanson Fume Hood Advantages

5SA Series - Bench Top Fume Hoods

- General Purpose Chemical Hoods
- Hi-Line Hoods
- ADA Hoods

4SA Series - Walk-In Fume Hoods

- WIV - Vertical Sash Hoods
- WIH - Horizontal Sash Hoods

Sash Designs and Operating Types

Canopy Hoods

Fume Hood Options and Accessories

Fume Hood Dimensional Information

Custom Sized Fume Hoods

QuickShip 7.1

In stock and ready to ship in as little as 24 hours

Base Cabinets

Wall and Tall Cabinets

Tables and Work Surfaces

Shelving Systems

Accessories

Note: Many HLF products are in stock and available to ship in as little as 24 hours. Look for the QuickShip icon throughout the catalog.



Get Started 8.1

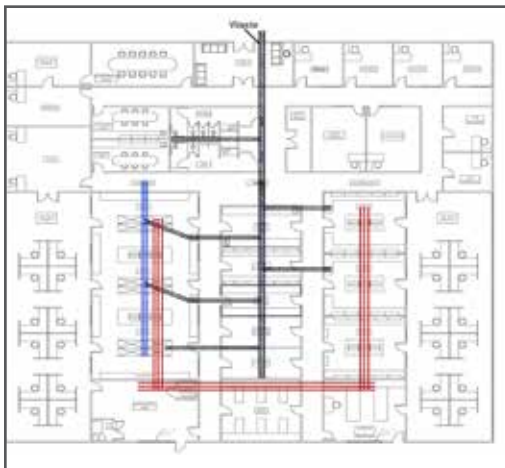
Get Started/Contact HLF

Map of HLF Service Locations

What We Deliver To Our Customers

Lab Planning 101

10 Ways To Save Money And Get The Lab You Want



1. Plan thoughtfully

Before you begin, get educated about the process. You need to know:

- The needs and expectations of functional group managers and other internal team members.
- The expertise and capabilities of your external team, including architects, engineers, CM, contractors, and lab planners.
- Your actual, current needs for space, processes, support areas, and materials storage. Plans made on assumptions mean that you could make costly mistakes. Plans made on projected growth can get expensive very quickly, as you add HVAC, power, data, and work space that you may not need for years to come. And the fact is that most well-planned labs can easily accommodate change when needed.

2. Keep your layout simple

- Minimize or eliminate walls between functions.
- Organize functional groups in shared space. It's cheaper to build now, and is more flexible later.
- Use islands and peninsulas to maximize your usable space. Putting benches only around the perimeter wastes as much as 75% of your square footage.

3. Establish "wet walls"

- Place sinks back to back on wet walls.
- Keep sinks in close proximity to process and research needs.
- Dedicate a sink for hand washing near entry/exit of lab.
- Avoid putting sinks on islands or peninsulas. It's harder to install, and costly to reconfigure.

4. Don't overbuild

- Build for your current needs, especially for power and ventilation.
- Plan separate storage for bulk supplies.
- Consider shared specialty gasses and data systems.

Lab Planning 101

10 Ways To Save Money And Get The Lab You Want



5. Specify 3 ft. and 4 ft. cabinets and wall cases

- A 36" or 48" cabinet only costs 30% more than an 18" or 24" cabinet.
- Using 3' and 4' cabinets whenever possible gives you more storage and workspace per linear foot for less money.



6. Choose open wall shelving

- More cost effective per linear foot.
- Can be deeper, taller, and hold more.
- Easily accessible above all work stations.

TIP: Use adjustable shelving on islands and peninsulas. HLF systems cost about the same as fixed, and give users much more flexibility.



7. Simplify and standardize

- Decide on the right casework system and configuration for you, and save by repeating throughout your building.
- Hanson Agility casework includes flex, mobile and convertible options. Hanson standard steel is an affordable casework choice that will last for years. They work together in unlimited combinations.
- Standardize design with repeated configurations. It looks great; it's cost efficient for architects, contractors, and MEP; and it's flexible in use.



8. Be smart about MEP

- A good layout plan drives the MEP (Mechanical, Electrical, Plumbing) plan. The MEP plan drives the cost.
- To avoid delays and cost overruns, don't specify power that exceeds current building capacity.
- For wall benches, electric, gases, and data should stay in the wall and off the countertop.
- Electrical raceway products are expensive to install. Avoid them whenever possible, especially at walls.
- The less plumbing you do under counter tops after the furniture is installed, the more money you'll save.
- Overhead services are best for peninsulas and islands. Penetrations through the counter top cost money. Why waste it?

10 Ways To Save Money And Get The Lab You Want



9. Choose the right casework

Conventional wisdom says that fixed cabinets cost less, but you sacrifice flexibility. But that's not always the case. Here's the rundown on different kinds of casework, and guidelines on when to use them.

Fixed Casework (HLF Standard)

- **Fixed casework** refers to a collection of cabinets joined together to form lab bench walls, islands, and peninsulas.
- Fixed casework can be used with adjustable, removable shelving and reagent racks.
- **Fact:** Fixed casework door and drawer combinations can be reconfigured in installed cabinets. At HLF, we can easily accommodate changing needs in response to work group changes, new equipment requirements, or new processes. This is especially true if you choose standard sized components.
- **Application:** Fixed casework is the best combination of cost and benefit for most applications, especially along walls.

Modular, Mobile, & Table-System (HLF Agility)

- **Modular casework** refers to cabinet systems that can be reconfigured for different needs. Modular casework is a component-based system, with more integral parts than fixed casework, like built in plumbing or electrical chases. In most cases, modular casework is not attached to floors or walls, and can be professionally re-installed when it's time to make a change.
- **Mobile casework** includes tables, instrument carts, and cabinets that can be moved or reconfigured as needed, often by users themselves. Mobile casework is not affixed to floors or walls. Cabinets, tables, and carts usually have wheeled casters to make moving them easier. Shelves have adjustable heights.
- **Table systems** are the most economical way to add configurability to your lab. A standard four-legged table is the basic building block. Add a flat top, a bottom shelf and caster wheels, and it's perfect for shared equipment. Add underhung or mobile cabinets underneath, and you have a workstation. Place several tables side by side, connect them with a single work surface, top with adjustable, removable shelving or reagent racks, and you have a bench wall.
- **Fact:** A high percentage of labs designed to be changed are never reconfigured from their original footprint. A high percentage of mobile furniture is never moved once it's loaded with equipment, materials, and supplies. While the idea of a flexible lab is appealing, carefully considering actual needs and working conditions can help you put modular, mobile and flex components only where you'll really need them. And that saves money.

Lab Planning 101

Quick Tips: 10 Ways To Save On Your Lab



10. Be very smart about fume hoods

Fume hoods are the most expensive casework in your lab. There's no doubt that they're costly to operate and maintain. But if you manage fume hoods properly, you'll save money on installation, now and for years to come.

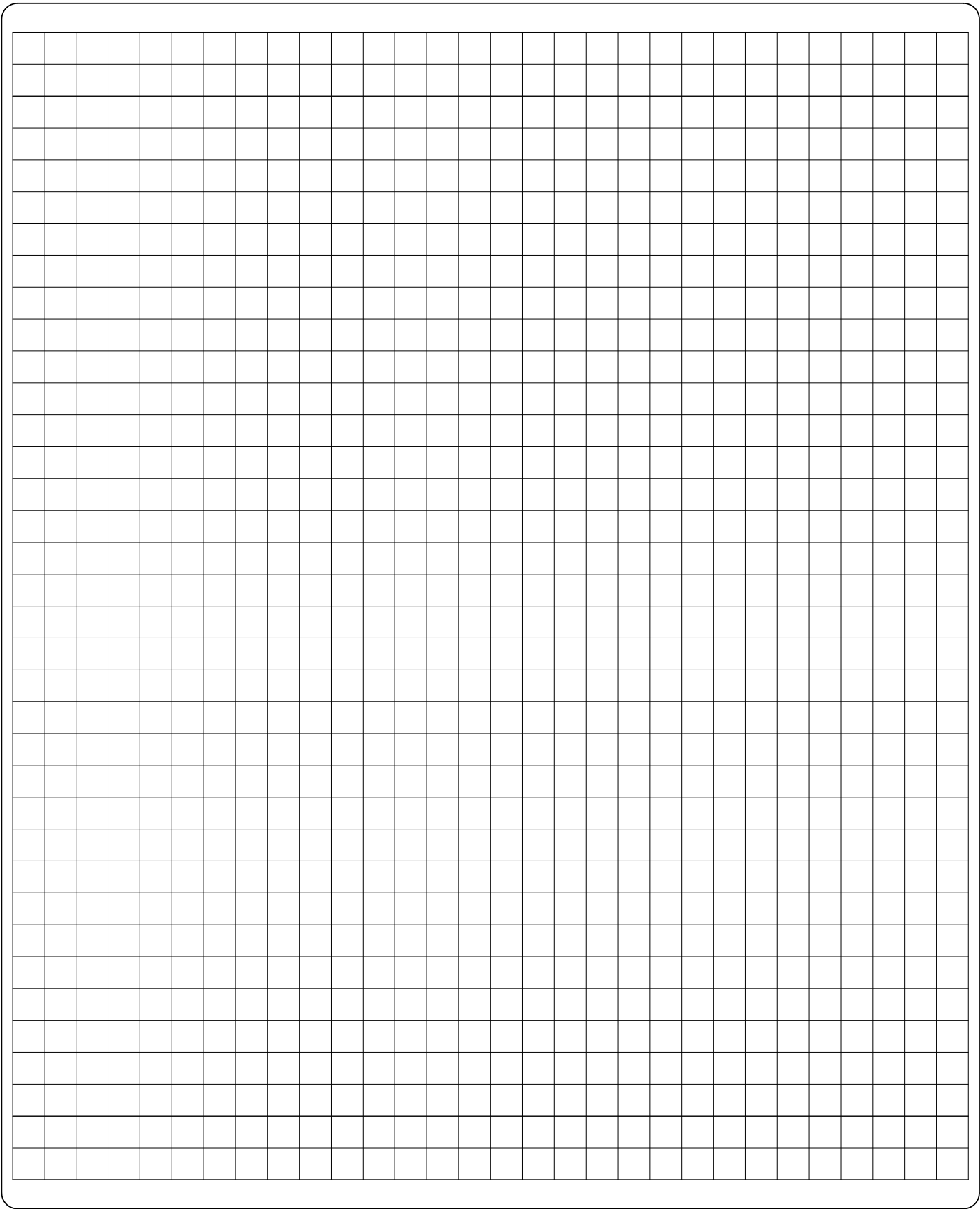
- Consider deeper fume hoods. Our 37" or 41" deep fume hoods have more interior working surface and equipment space, while utilizing the same air requirements as our 31" deep hoods.
- Consider the size of hoods that you'll need: 4' and 5' hoods are about the same cost per unit; 6' and 8' hoods are about the same cost per unit. You'll pay more per linear foot for smaller hoods, so choose larger hoods when you can.
- Include chemical storage safety cabinets in your plans. They make good choices as base cabinets for bench top hoods.

Variable air volume vs. constant air volume?

- Constant volume is good for small applications, for dedicated exhaust, or for two to four units sharing an exhaust.
- Most hoods have "setup" time and "run" time, or are only used on a limited basis. While slightly more expensive to buy, that makes a two-speed exhaust more cost effective in use. Typically, low speed is 50% of high speed. Set the blower on high for setup, low for run-time, or for limited-use purposes.
- Hoods should be in close proximity to one another to save money on installing and maintaining the exhaust system.
- You can also plan for future hoods to be added to the system. But make sure future expansion is identified in the building plan, so that the whole building exhaust and supply can accommodate future needs. For example, you can buy a blower for a 4-hood system when you're only planning to install two hoods at first. Then just block off your "future" duct until you buy the additional hoods.

Energy costs count in planning for fume hoods

- Minimize the negative air requirement in your lab.
- Validate your fume hood requirements carefully. Get your MEP engineer involved early to plan for the entire lab and building needs.
- Don't undercut your needs. The worst thing you can do is run out of air.
- In the past, fume hoods were specified at 125 Linear Feet per Minute (LFM) at full sash open. Current industry standards are now 100 LFM at 18" sash open.
- Check your local codes and internal EH&S requirements before you install your hoods.

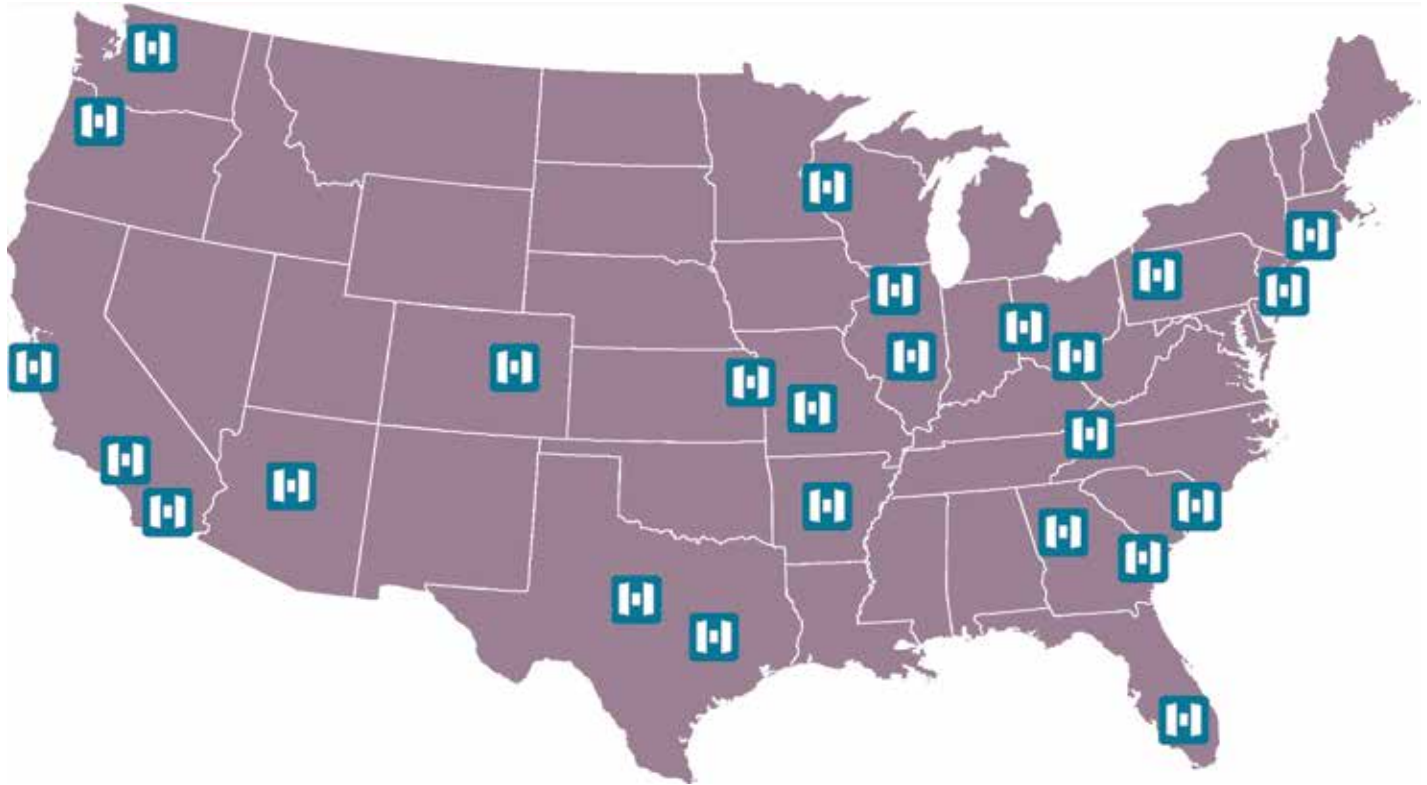


DRAWN BY:	DATE:	SCALE: 1/4"=1'	PROJECT:
SHEET NO:	JOB NO:	QUOTE NO:	

HANSON LAB FURNITURE, INC.
814 MITCHELL RD.
NEWBURY PARK, CA 91320
PH: 805/498-3121

Where To Find HLF

Our Lab Professionals Serve Customers Throughout The U.S.



Here's what we deliver to our customers:

- Design and conceptual planning
- Installation
- Engineering
- National HLF representation with project management and installation support
- Support for engineers and contractors. Let us help you develop your new lab.
- Ideas and suggestions for how to do it better, faster, and cheaper
- Custom looks for standard costs: if you want a custom lab, we can show you how you may be able to achieve the same look with custom configuration of standard products.
- And if you really need custom pieces, we're vertically integrated, with design, manufacturing, and expert installation in one company. So we are likely to be able to deliver custom furniture and fume hoods at lower costs than you might expect.
- The fastest delivery in the industry. In every category. Period.

Ready to get started? We're here to serve you.

Call us at 1-805-498-3121

Email us at info@hansonlab.com

Or call your HLF representative