


Hanson Express

In stock & out the door



Need it now? Get it now!

Hundreds of Hanson Express products are in stock and ready to ship in as little as 48-72 hours.

Look for the  symbol for several Hanson Express items throughout the catalog.

You'll get all the other value that Hanson brings to your project, too, including:

- The ability to add casework from the full Hanson catalog with our shorter standard lead times.
- The option to mix and match with other HLS lines, including Fixed, Mobile, or our Agility line of laboratory design solutions.

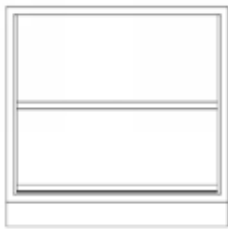
Hanson Express Index

Cabinets.....	7.01
• Base Cabinets	
• Wall and Sink Cabinets	
• Mobile Cabinets	
• Casework Accessories	
Tables and Workstations.....	7.03
• M-Series Workstations	
• Utility Tables	
• Table and Bench Workstations	
Fillers, Legs, and Panels.....	7.04
• Table Legs	
• Apron Rails	
• Drawer Housings Filler Panels	
• Knee Space Panels	
Laboratory Sinks and Accessories.....	7.09
• Faucets	
• Safety Products	
• Sinks	
• Pegboards	
Shelving.....	7.10
• Shelves	
• Brackets	
Fume Hoods.....	7.11
• Fume Hoods Safety Cabinets	
• Options and Accessories	

Hanson Express

Base Cabinets

Standing Height Cabinets - 35"



Model	Width
DY36H	36"



Model	Width
HX-AA24H	24"



Model	Width
HX-AE18H	18"
HX-AE24H	24"



Model	Width
HX-AB18H	18"
HX-AB24H	24"

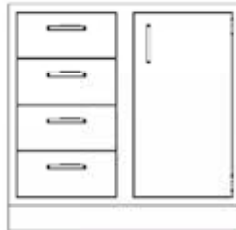
Standing Height Cabinets - 35"



Model	Width
HX-DA36H	36"
HX-DA48H	48"



Model	Width
HX-DD36H	36"
HX-DD48H	48"



Model	Width
HX-DG36H	36"

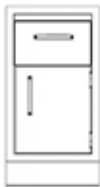


Model	Width
HX-DN48H	48"



Model	Width
HX-DZ48H	48"

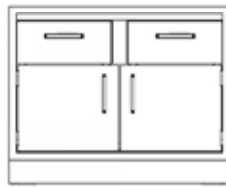
Sitting Height Cabinets - 29"



Model	Width
HX-AB18L	18"

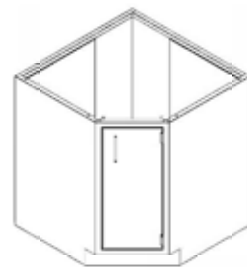


Model	Width
HX-AG24L	24"



Model	Width
HX-DD36L	36"

Corner Base Cabinets - 35"

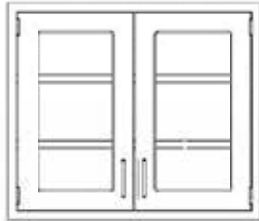


Model	Width
DX14H	32"

DX diagonal corner cabinets
do not have shelves

Wall Cabinets

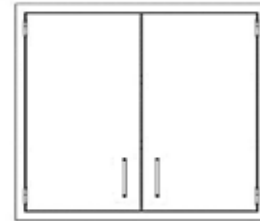
Framed Glass
Hinged Doors



Model	Width	Height	Depth
HX-E36M	36"	36"	13"
HX-E48M	48"	36"	13"

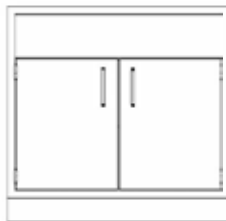
Wall Cabinets

Solid Metal
Hinged Doors



Model	Width	Height	Depth
HX-B36M	36"	36"	13"
HX-B48M	48"	36"	13"

Sink Cabinets



Model	Width
HX-DB36H	36"
HX-DB48H	48"
HX-DB58H	58"
HX-DB36ADA	36"

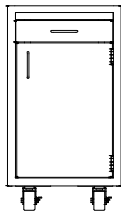
Tall Storage Cabinets

Framed Glass
Hinged Doors



Model	Width	Height	Depth
HX-L48HA	48"	84"	16"
HX-L48HB	48"	84"	21"

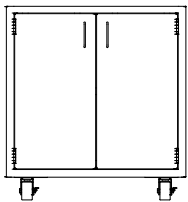
Standard Height - 32 1/2"



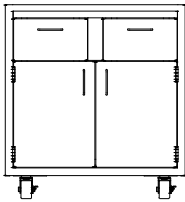
Model	Width
HX-AB18HM	18"



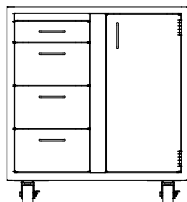
Model	Width
HX-CP24HM	24"



Model	Width
HX-DA30HM	30"

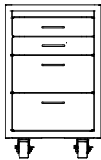


Model	Width
HX-DD30HM	30"

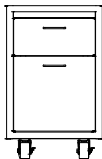


Model	Width
HX-DG30HM	30"

Sitting Height - 29"



Model	Width
HX-AF18LM	18"



Model	Width
HX-AG18LM	18"

Standing Height Cabinets - 35"

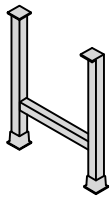
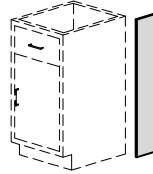


Table leg, dual flanged

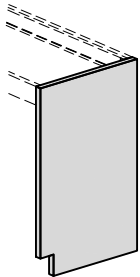
Model	Size
HX-FHL36A	35"H x 22"D



End Filler Panels

- Includes one single filler angle

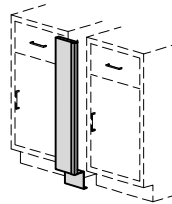
Model	Size
HX-PSF1H	1"W x 35"H
HX-PSF7H	7"W x 35"H
HX-PSF11H	11"W x 35"H



End Support Panel

- Used in place of legs on one end of apron rails or drawer frames
- 1-1/4" wide
- Leg levelers and three support angles provided

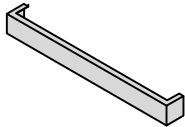
Model	Height	Depth
HX-HGL36A	35"	22"



Front Filler Panels

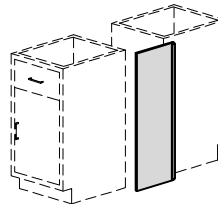
- Includes one double-slip filler angle

Model	Size
HX-BF1H	1"W x 35"H
HX-BF8H	8"W x 35"H
HX-BF14H	14"W x 35"H
HX-BF18H	18"W x 35"H



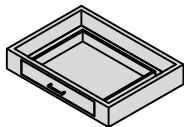
Apron Rail

Model	Width
HX-A30	30"W x 4-1/2"H
HX-A36	36"W x 4-1/2"H
HX-A48	48"W x 4-1/2"H



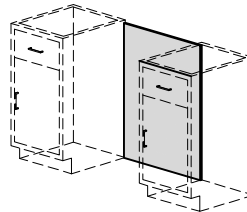
Island Filler Panels

Model	Size
HX-BCF3H	3"W x 35"H
HX-BCF8H	8"W x 35"H
HX-BCF14H	14"W x 35"H



Drawer Housing, 1 Drawer

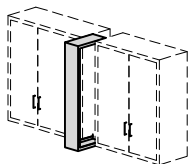
Model	Size
HX-DH-1-30A	30"W x 4-1/2"H x 22"D
HX-DH-1-36A	36"W x 4-1/2"H x 22"D
HX-DH-1-48A	48"W x 4-1/2"H x 22"D



Knee Space Filler Panels

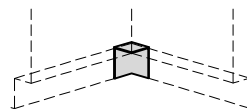
- Includes two single filler angles

Model	Size
HX-KSP3035	30"W x 35"H
HX-KSP3635	36"W x 35"H
HX-KSP4835	48"W x 35"H



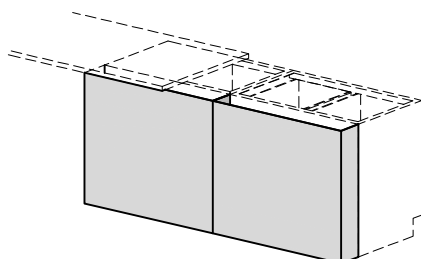
Wall Cabinet Filler Panel

Model	Size
HX-WCF6M13	6"W x 36"H



Island Filler Panels

Model	Size
HX-TSF	3"W x 4"H



Standing Height 35" x 6" Deep

Model	Width	Depth	Height
HX-REP24H6	24"	7"	35"
HX-REP36H6	36"	7"	35"
HX-REP48H6	48"	7"	35"

Sitting Height Cabinets - 29"

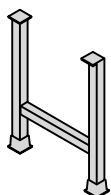
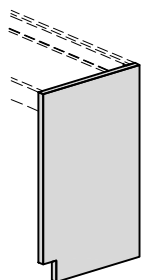


Table leg, dual flanged

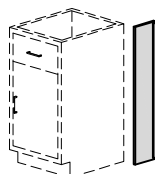
Model	Size
HX-FHL30A	29"H x 22"D



End Support Panel

- Used in place of legs on one end of apron rails or drawer frames
- 1-1/4" wide
- Leg levelers and three support angles provided

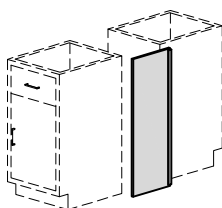
Model	Height	Depth
HX-HGL30A	29"	22"



End Filler Panels

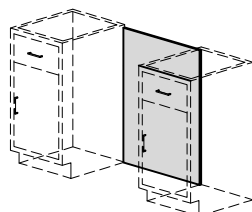
- Includes one single filler angle

Model	Size
HX-PSF7L	7"W x 29"H



Island Filler Panels

Model	Size
HX-BCF14L	14"W x 29"H



Knee Space Filler Panels

- Includes two single filler angles

Model	Size
HX-KSP3029	30"W x 29"H
HX-KSP3629	36"W x 29"H
HX-KSP4829	48"W x 29"H

M-Series Workstations

M-Series Bench Systems

This new line of benches has been engineered with basic features to meet your load and usage demands, including knock-down design for economical transportation

Pre-configured M1 and M2 versions are available in-stock through Hanson Express in four (4) styles:

- M1 or M2 without power or accessories
 - M1 or M2 with four (4) white 20A 120V duplexes, single circuit, cord exit at top of post, and L5-20P plug
- Power, data, and gas service options can be upgraded or re-configured in the field with minimal effort

Note: If Quick-Ship is not a requirement, fully optioned M-Series benches per your specification can also be supplied through the HLS sales team with standard HLS lead times

Hanson Express Bench Configurations:

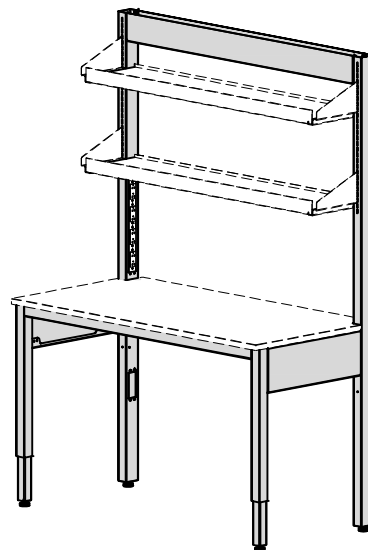
- M1 - Single-sided, 60" or 72" wide x 30" deep, 2x3" upright post
- M2 - Double-sided, 60" or 72" wide x 60" deep, 2x3" upright post

Included features

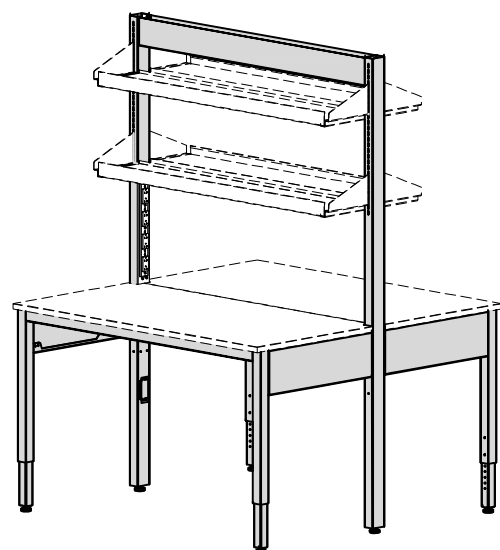
- Six-position adjustable work top height (1" increments from 30-3/4 to 36-3/4")
- Knockdown design (assembly required)
- 14-gauge steel tube construction typical
- Durable powdercoat finish
- 84" tall upright posts
- Accessory port covers allow future upgrades as needed
- Static load capacity, equally distributed combined system: 1200 lbs (SEFA category 4)

Available options:

- Pre-wired 20A 120V duplexes in left-hand vertical post
- 1" thick lab-grade phenolic work surface
- Upper shelving
- Mobile and suspended cabinets
- Horizontal power strip
- Bin box mount



M1 - (shown w/ accessories)



M2- (shown w/ accessories)

M-Series Workstations

Basic pre-configured bench assemblies

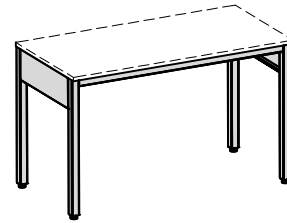
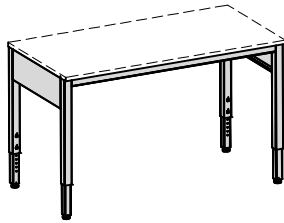
Part Number	Description	Frame Width	Frame Depth	Top Size (sold separately)	Frame configuration
HX-M1-6030H	SINGLE FRAME ASY, M1, 60W x 30D x 84H, NO ACCYS, NO TOP	59-3/4"	28"	60" x 30"	Single-side
HX-M1-6030H-1P	SINGLE FRAME ASY, M1, 60W x 30W x 84H, LH POST 4-DUPLEX POWER W/CORD, NO TOP	59-3/4"	28"	60" x 30"	Single-side
HX-M2-6060H	DOUBLE FRAME ASY, M2, 60W x 60D x 84H, NO ACCYS, NO TOP	59-3/4"	58"	60" x 60" (2 piece top)	Double-side
HX-M2-6060H-1P	DOUBLE FRAME ASY, M2, 60W x 60D x 84H, 1-POST 4-DUPLEX POWER W/CORD, NO TOP	59-3/4"	58"	60" x 60" (2 piece top)	Double-side
HX-M1-7230H	SINGLE FRAME ASY, M1, 72W x 30D x 84H, NO ACCYS, NO TOP	71-3/4"	28"	72" x 30"	Single-side
HX-M1-7230H-1P	SINGLE FRAME ASY, M1, 72W x 30D x 84H, LH POST 4-DUPLEX POWER W/CORD, NO TOP	71-3/4"	28"	72" X 30"	Single-side
HX-M2-7260H	DOUBLE FRAME ASY, M2, 72W x 60D x 84H, NO ACCYS, NO TOP	71-3/4"	58"	72" x 60" (2 piece top)	Double-side
HX-M2-7260H-1P	DOUBLE FRAME ASY, M2, 72W X 60D X 84H, 1-POST 4-DUPLEX POWER W/CORD, NO TOP	71-3/4"	58"	72" x 60" (2 piece top)	Double-side

Work surfaces, M-Series workstations

Part Number	Description
HX-CTOP-PHENM16030-1.0IN	COUNTERTOP, PHENOLIC, M1 60x30 BLACK, FIN EDGES, 1" THK, EACH
HX-CTOP-PHENM17230-1.0IN	COUNTERTOP, PHENOLIC, M1 72x30 BLACK, FIN EDGES, 1" THK, EACH
HX-CTOP-PHENM260DS-1.0IN	COUNTERTOP, PHENOLIC, M2 60x30 DS BLACK, FIN EDGES, 1" THK, EA (2 REQ'D)
HX-CTOP-PHENM272DS-1.0IN	COUNTERTOP, PHENOLIC, M2 72x30 DS BLACK, FIN EDGES, 1" THK, EA (2 REQ'D)

Standard Duty Adjustable & Fixed Height Table Frames

- Tables can be used with upright posts, upper shelves, lower shelf, power strip kit, single drawer or mobile cabinet
- Countertop, brackets, shelves, and cabinets must be ordered separately
- Typical countertop overhang on Utility Table frame is 1/8" at sides, 1" at front, flush at rear (for optional upright kit installation)
- Assembly required



Adjustable Height Table Frames

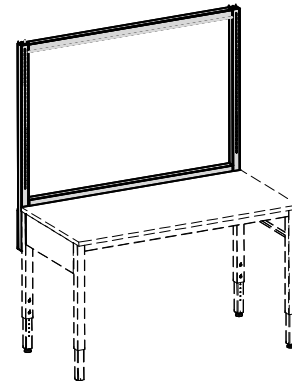
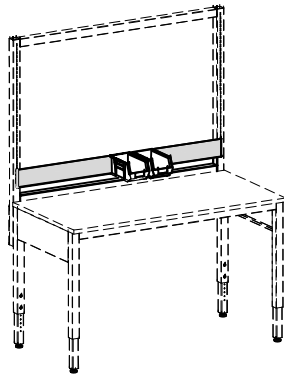
Frame height adjustment is from 29-3/4" - 35-3/4" w/out countertop

Model	Frame Width	Frame Depth	Top Size
HX-UTA36B	35-3/4"	29"	36" x 30"
HX-UTA48B	47-3/4"	29"	48" x 30"
HX-UTA60B	59-3/4"	29"	60" x 30"
HX-UTA72B	71-3/4"	29"	72" x 30"

Fixed Height Table Frames

35-3/4" High w/out countertop

Model	Frame Width	Frame Depth	Top Size
HX-UTFH36B	35-3/4"	29"	36" x 30"
HX-UTFH48B	47-3/4"	29"	48" x 30"
HX-UTFH60B	59-3/4"	29"	60" x 30"
HX-UTFH72B	71-3/4"	29"	72" x 30"



Bin Box Mounts

Bin box not included

(also compatible w/ Agility & HDW systems)

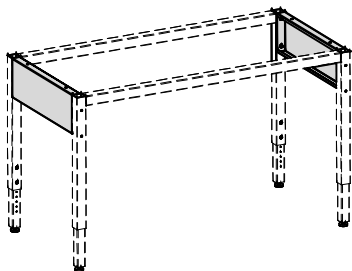
Model	Length
HX-A13412-36	36"
HX-A13412-48	48"
HX-A13412-60	60"
HX-A13112-72	72"

Upright Post Kits

Includes 2" X 2" vertical posts, horizontal cross members, and hardware.

Table, shelves, and shelf brackets not included

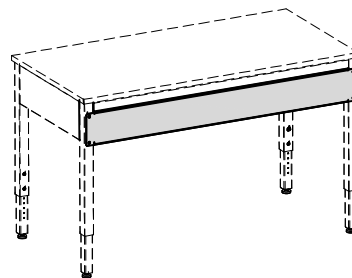
Model	Frame Width	Frame Height
HX-K13409-36	35-3/4"	52-1/2"
HX-K13409-48	47-3/4"	52-1/2"
HX-K13409-60	59-3/4"	52-1/2"
HX-K13409-72	71-3/4"	52-1/2"



Frame Depth Extension Apron

Frame depth extension aprons accommodates 24" or 36" deep work surface (sold separately)

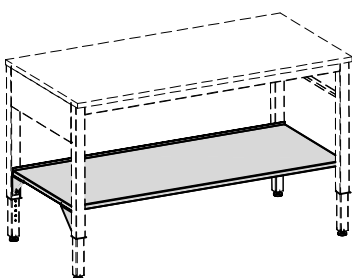
Model	Apron Width	Finished Frame Depth
HX-K13408-24	19"	23"
HX-K13408-36	31"	35"



Rear Pan

Suggested for applications with dynamic equipment

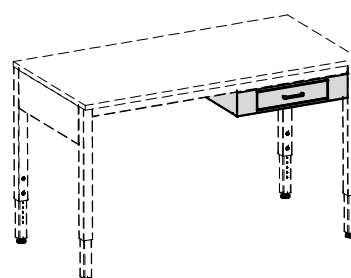
Model	Length	Height
HX-C13406-36	36"	6-1/2"
HX-C13406-48	48"	6-1/2"
HX-C13406-60	60"	6-1/2"
HX-C13406-72	72"	6-1/2"



Lower Shelving Kits

Under counter use includes shelf, & mounting brackets. Table frame, & work surface sold separately.

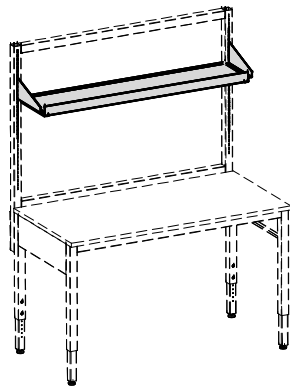
Model	Length	Depth
HX-K7003-36	35-1/2"	24-3/4"
HX-K7003-48	47-1/2"	24-3/4"
HX-K7003-60	59-3/4"	24-3/4"
HX-K7003-72	71-3/4"	24-3/4"



Single Drawer

Includes single 24" x 28" drawer housing. Table frame and work surface sold separately.

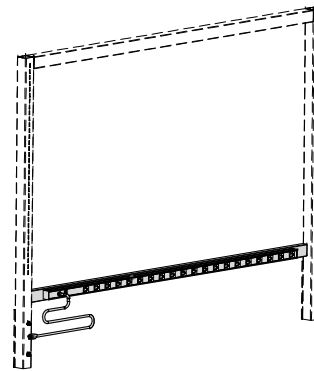
Model	Width	Depth
HX-DH-1-24B	24"	28"



Upper Shelf Kits

Includes 12" deep painted metal shelf, and brackets. Requires upright post kit, and table sold separately (also compatible w/ Agility & HDW systems)

Model	Width	Depth
HX-K13070-12	31-1/2"	12"
HX-K13032-12	43-1/2"	12"
HX-K13033-12	55-1/2"	12"
HX-K13034-12	67-1/2"	12"



Power Strip Kits (15A)

Upright post kit sold separately (also compatible w/ Agility & HDW systems)

Model	Mount Width	Strip Length	Cord Length	Outlet Qty.
HX-K13411-36	34.65"	24"	6'	8
HX-K13411-48	46.65"	36"	15'	12
HX-K13411-60	58.65"	48"	15'	8
HX-K13411-72	70.65"	60"	15'	20

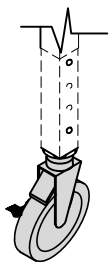


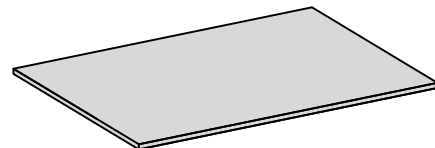
Table Caster Kit

- Available for all 4-leg tables, set includes 4 swivel locking stem casters
- Caster wheels are 4" dia. non-marking gray thermoplastic rubber tread on a polypropylene core.
- Casters add 5-1/8" to table height unless table height is adjusted prior to caster installation

Model	Quantity
HX-CASTERX4	4

Note:

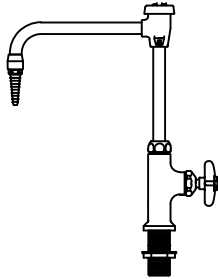
Casters are not to be used to "Level" tables. Caster stems must be screwed tight into the table leg to insure stability.



Phenolic Resin Table Tops - Black

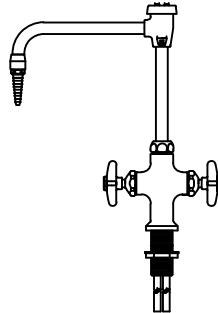
Model	Width	Depth	Thickness
HX-3630CRP	36"	30"	3/4"
HX-4830CRP	48"	30"	3/4"
HX-6030CRP	60"	30"	3/4"
HX-7230CRP	72"	30"	3/4"

Single Faucet - Counter Mount



HX-L614-8VB

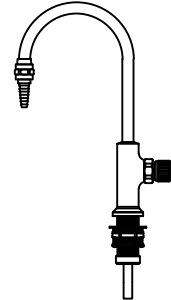
Counter mounted cold water vacuum breaker gooseneck faucet. Chrome plated brass with 8" spread rigid / swing gooseneck. Removable straight serrated hose connector.



HX-L414-8VB

Counter mounted hot and cold mixing vacuum breaker gooseneck faucet. Chrome plated brass with an 8" spread rigid / swing gooseneck. Removable straight serrated hose connector.

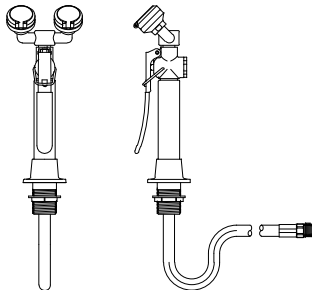
Distilled Water Faucet



HX-L7853

Chrome plated w/ polypropylene liner. Right hand deck mounted distilled water faucet. Profax natural polypropylene material. Standard 3/8" female NPT inlet connection. Molded serrated outlet fitting connects to different tubing sizes. Full flow at 1 full turn. 6" spread rigid gooseneck.

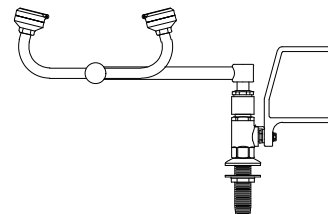
Emergency Eyewash



HX-EW1022

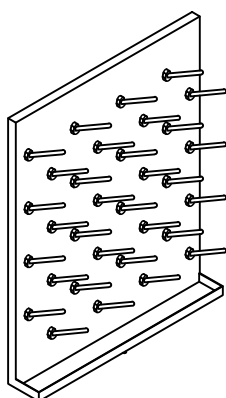
Deck mounted dual purpose eye wash / drench hose with two gentle spray outlet heads angled at 45° and squeeze valve with locking clip.

Flange, shank, and locknut for attaching to table top are included. 3/8" I.P.S. male thread swivel inlet.



HX-EW806

Right hand sided sink-top mounted eyewash. Spray heads swivel 90 degrees from storage to operational position. Water flow is activated by flag handle. Each spray head has a "flip top" dust cover, internal flow control, and filter to remove impurities from the water flow. Chrome-plated brass stay-open ball valve. 1/2" NPT male inlet. Furnished with locknut and washer for securing to countertop.



Stainless Steel Pegboards

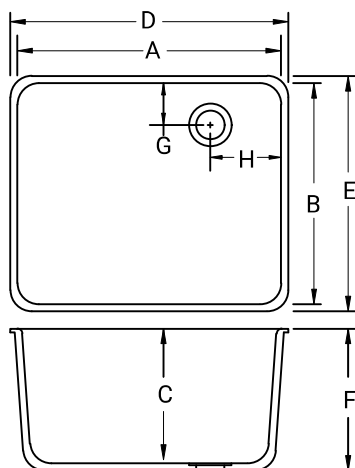
Includes integral drip tray with a drainage tube.

Model	Size	Pegs	Drip Tray
HX-V2424-2	24"W x 24"H	32	2"
HX-V2430-2	24"W x 30"H	50	2"



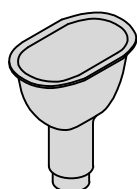
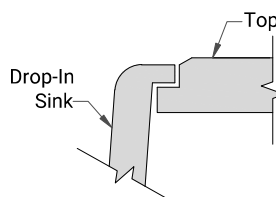
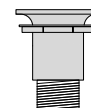
Drop-In Epoxy Sinks

Model	Inside			Outside			Drain		Outlet
	A	B	C	D	E	F	G	H	
D30-S	18.0	15.0	11.0	19.6	16.6	11.9	3.5	3.5	Corner
D55-S	25.0	15.0	10.0	26.6	16.6	11.0	4.5	4.5	Corner
ADA Compliant Sinks:									
A25-S	18.0	15.0	5.0	19.6	16.6	5.8	3.5	3.5	Corner
A55-S	25.0	15.0	5.1	26.6	16.6	5.4	3.9	3.9	Corner



S504-B

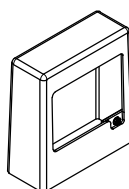
Black Polypropylene sink outlet. Complete with locknut and disc strainer.
1 1/2" BSP male straight thread outlet.



Cup Sink

Model	Size
HX-CS4R	6" x 3"

Black Polypropylene. Complete with removable strainer. 6" x 3" inside dimension. 1 1/2" I.P.S. male straight thread outlet. (Overall height is 7 1/2")

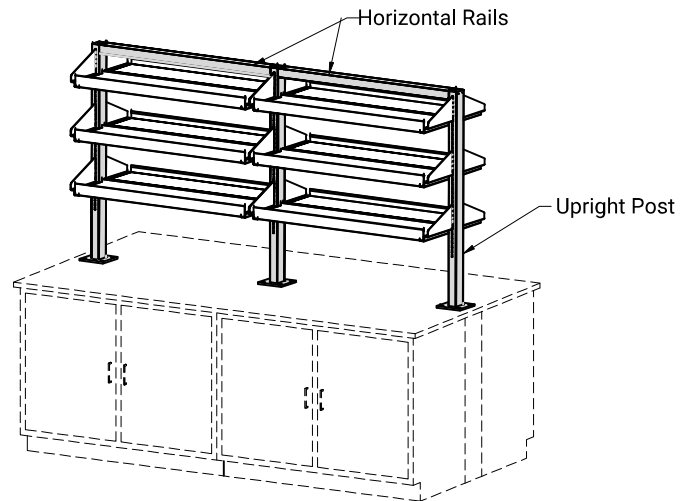


Double Pedestal Double Sided

Model	Finish
HX-E600SA	Satin (Brushed) Aluminum

Bench Top Adjustable Shelving System

- Can be used on new or existing island and peninsula benches
- Components shown are sold individually
- Select matching widths for your application
- 48" high x 2" wide x 3" deep powdercoated steel uprights mount onto the countertop through integrated mounting plate
- Upright posts are located at center and end locations
- End posts must be positioned a minimum of 3-1/4" from end of counter top at each side
- A center cord gap is provided between shelves for vertical integration of shelf equipment
- Shelves are adjustable and removable
- Shelving system is compatible with standard Hanson shelves
- See below for in-stock shelves or see shelving pages 4.04-4.08 for sizes and styles



Upright Post

- Upright Post (each; includes bench top mounting hardware)

Model	Size	Height
HX-BTUP48-G2	2" W X 3" D	29-3/4"

Horizontal Top Rails

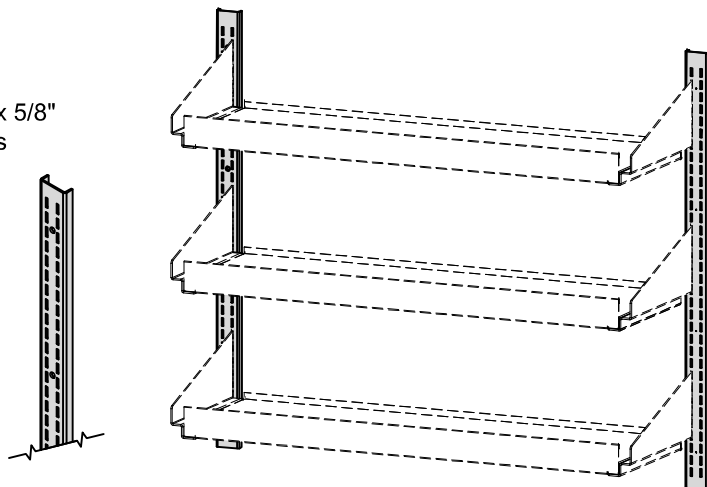
- Top rails attach between upright posts installed at the center lines listed below

Model	Width	Centerline of Upright Post
HX-C13174-31	31-3/4"	33-3/4"
HX-C13174-43	43-3/4"	45-3/4"
HX-C13174-55	55-3/4"	57-3/4"
HX-C13174-67	67-3/4"	69-3/4"

Wall Standards

- Wall standards are painted steel, 12 ga., 2" w x 5/8" d, double slotted for use with bookend brackets
- Shelves are adjustable in 1" increments
- In-wall backing required for all wall shelving
- Shelves sold separately

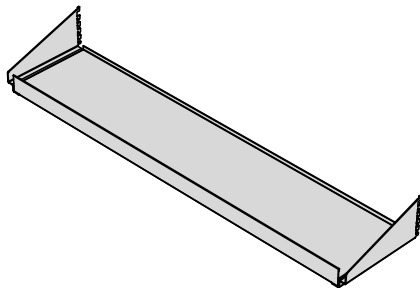
Model	Height
HX-HDS48-G2	48"



Painted Steel Shelving Kits

- Includes (1) left and (1) right side bookend bracket per kit

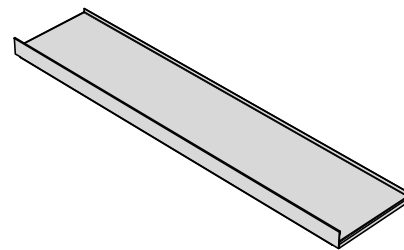
Model	Shelf Width	Depth
HX-K13070-12	33 1/2"	12"
HX-K13032-12	45 1/2"	12"
HX-K13033-12	57 1/2"	12"
HX-K13034-12	69 1/2"	12"



Painted Steel Shelving

- Single Shelf - does not include brackets

Model	Width	Depth
HX-C13070-12	33 1/2"	12"
HX-C13032-12	45 1/2"	12"
HX-C13033-12	57 1/2"	12"
HX-C13034-12	69 1/2"	12"

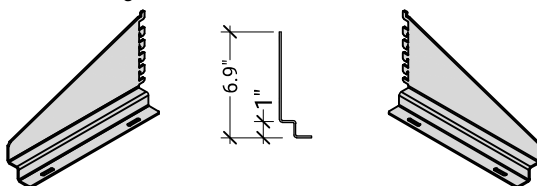


Bookend Brackets

- Offset style bookend brackets are 6.9" high, 11 ga. painted steel
- Included in Hanson Express shelving kits
- 12" deep brackets

Model	Usage
HX-C13026-1	Left hand side; 12" or 14" D shelves
HX-C13026-2	Right hand side; 12" or 14" D shelves

Each model number includes a set of Left and Right hand brackets

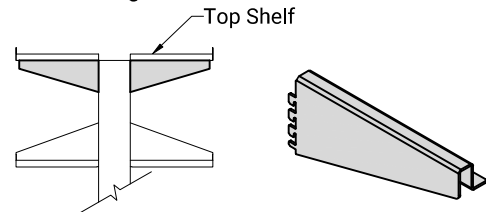


Inverted Top Brackets

- Used to place a shelf at the top of the upright post
- Reversed offset style bookend brackets are 4.9" high, 11 ga. painted steel
- 12" deep brackets

Model	Usage
HX-C13029-1	Left hand side; 12" D shelves
HX-C13029-2	Right hand side; 12" D shelves

Each model number includes a set of Left and Right hand brackets

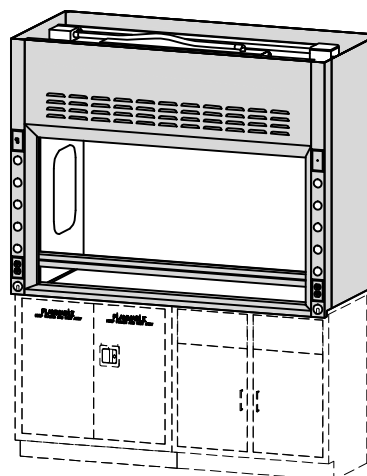


Constant Volume By-Pass - Vertical Sash

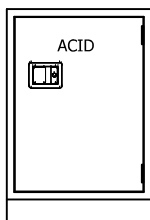
- General purpose 47" or 70" chemical fume hoods
- Standard electrical package includes a vapor proof LED light, light switch, and two 120V duplex receptacles, prewired to a junction box located at the top of the hood
- See page XX for more details

Fume Hood Options

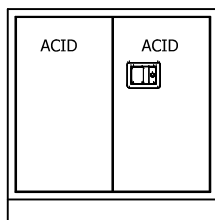
- Service Fixtures - Air, Vacuum, Gas, Cold Water
- Hood Counter Tops and Cup Sink
- Base and Specialty Cabinets
- Monitors / Alarms
- Pre-piping of Service Fixtures



Acid Cabinets

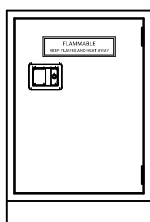


Model	Height
HX-ASB24H	24"

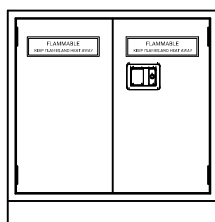


Model	Height
HX-ASB36H	36"
HX-ASB48H	48"

Flammable Storage Cabinets

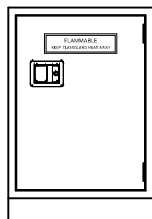


Model	Height
HX-FSB24H	24"



Model	Height
HX-FSB36H	36"
HX-FSB48H	48"

Vacuum Storage Cabinets

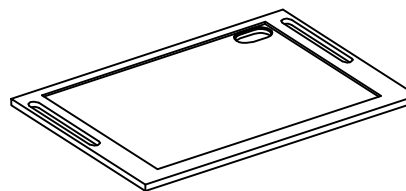


Model	Height
HX-VAC24HF	24"

Fume Hoods

Model	Height	Depth
HX-5SA48A	48"	31-3/8"
HX-5SA72A	72"	31-3/8"

Fume Hood Counter Tops



Model	Width
HX-EHT48A	48"
HX-EHT72A	72"
HX-EHT48A-C*	48"
HX-EHT72A-C*	72"

*w/ cup sink cutout at right rear corner